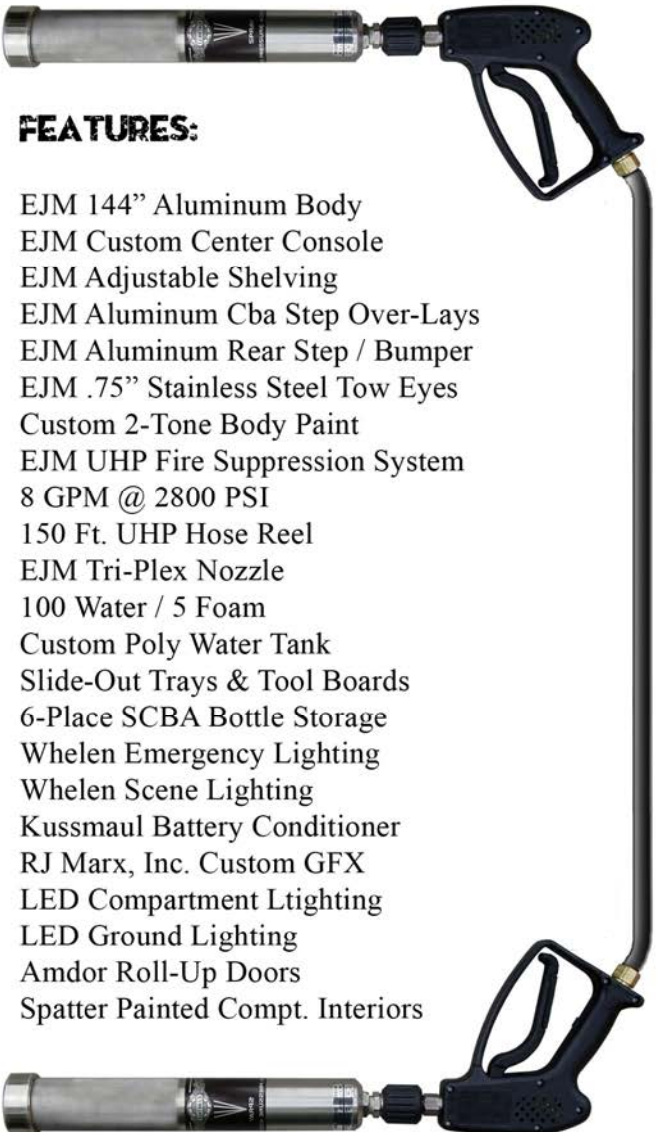


**DELIVERED:
JANUARY - 2015**



CHASSIS: 2015 Ford F550 SD
4x4, 6.7L, XLT, 4-Door Crew Cab
200" W/B, 84" C/A, 19,500# GVWR



FEATURES:

- EJM 144" Aluminum Body
- EJM Custom Center Console
- EJM Adjustable Shelving
- EJM Aluminum Cba Step Over-Lays
- EJM Aluminum Rear Step / Bumper
- EJM .75" Stainless Steel Tow Eyes
- Custom 2-Tone Body Paint
- EJM UHP Fire Suppression System
- 8 GPM @ 2800 PSI
- 150 Ft. UHP Hose Reel
- EJM Tri-Plex Nozzle
- 100 Water / 5 Foam
- Custom Poly Water Tank
- Slide-Out Trays & Tool Boards
- 6-Place SCBA Bottle Storage
- Whelen Emergency Lighting
- Whelen Scene Lighting
- Kussmaul Battery Conditioner
- RJ Marx, Inc. Custom GFX
- LED Compartment Lighting
- LED Ground Lighting
- Amdor Roll-Up Doors
- Spatter Painted Compt. Interiors





FRONT COMPARTMENTS – (TRANSVERSE)

53.00" W x 55.00" H
 50.75" W x 47.75" H
 56.00" W x 14.00" H x 69.75" D
 56.00" W x 37.50" H x 92.75" D
 56.00" W x 13.75" H x 22.50" D



OVER WHEEL COMPARTMENTS – (TRANSVERSE)

46.00" W x 32.00" H
 43.75" W x 24.75" H
 51.50" W x 14.00" H x 10.75" D
 51.50" W x 37.50" H x 92.75" D

REAR SIDE COMPARTMENTS

33.00" W x 55.00" H
 30.75" W x 47.25" H
 33.00" W x 14.00" H x 10.75" D
 33.00" W x 50.50" H x 22.50" D

ULTRA-HIGH PRESSURE PUMP

8 gallons per minute at 2,800 PSI
 Die cast aluminum crankcase
 Stainless steel valves and seats
 Chrome-moly crankshaft
 Oversized bearings
 Brass inlet manifold
 Stainless steel discharge manifold
 Specially formulated high pressure seals



OPERATOR CONTROLS

Ignition switch with key
 Engine choke
 On / Off - foam agent valve
 Hose reel re-wind switch
 Pump primer valve
 Engine start pump by-pass valve



**Contact us at 920.779.9913
 or visit www.ejmetals.com
 for more information.**



With over 30 years experience in the fire industry you can count on EJ Metals, Inc. to deliver high quality fire truck apparatus systems.

EJ Metals, Inc. • 1201 Maple Creek Lane, New London, Wisconsin 54961

www.ejmetals.com

Specifications, descriptions and illustrative material in this literature are as accurate as known at the time of publication, but are subject to change without notice. Photos and/or illustrations may include optional equipment and accessories and may not include all standard equipment. All measurements are nominal values.
 © EJ Metals, Inc., EJ Metals and the EJ Metals logo are trademarks of EJ Metals, Inc.